

## Contite® WS2

A TWO PART CEMENTITIOUS WATERPROOFING MEMBRANE FOR CONCRETE & MORTAR SURFACES

### DESCRIPTION

A two part acrylic polymer modified cementitious waterproof coating supplied in kits ready to use for the protection of concrete and mortar. **Contite WS2** provides excellent adhesion and durability.

**Contite WS2** complies with the requirements of EN 1504-2 as protective coating.

### USES & ADVANTAGES

**Contite WS2** is suitable for many waterproofing applications including for sealing swimming pools, balconies, bathrooms, wet areas, tanks and basements.

#### Advantages Include:-

- Minor / micro crack bridging & sealing.
- Non toxic.
- Excellent adhesion.
- Protection against carbonation and chlorides.
- Unlike conventional coatings that require the concrete to cure for 7 - 28 days it can be applied to 24 hours old concrete.
- Increased frost & salt resistance.
- Easy to apply.
- Minimum surface preparation needed.
- Excellent for damp-proofing basements below ground.
- Breathable - allows transmission of water vapour from interior of building.

**Contite WS2** can be used for concrete protection. in particular it is:

- ✓ Suitable for protection against ingress (Principle 1, method 1.3 of EN 1504-9),
- ✓ Suitable for moisture control (Principle 2, method 2.2 of EN 1504-9)
- ✓ Suitable for increasing the resistivity (Principle 8, method 8.2 of EN 1504-9)

### PROPERTIES

<b>Component:</b>	Two Part (Part A - Polymer /Part B - Powder)
<b>Appearance:</b>	Grey (when mixed)
<b>Mixed Density:</b>	2.00 + 0.05 kg/l.
<b>Pot life:</b>	30 minutes at 30°C.
Pot life will be shortened at higher temperatures	
<b>Tensile Strength:</b>	≥ 0.5 N/mm <sup>2</sup>
ASTM D412/DIN53455	
<b>Adhesion to Concrete:</b>	≥ 0.5 MPa
ASTM D4541	
<b>Application Temperature:</b>	+5°C to +40°C
<b>Mixing Ratio:</b>	A : B = 1 : 4 by weight
<b>Coverage:</b>	Approx. 1-1.5 kg/m <sup>2</sup> /coat at 0.5 mm thickness, apply 2 coats

*\* Properties are typical under laboratory conditions and do not constitute a specification. Field trials are recommended.*

### MIXING

**Contite WS2** is supplied in premeasured units. Slowly add the powder to the liquid and mix to a lump free smooth consistency. Do not add water or rework a stiffened mix by adding water. Mix sufficient material to use within 30-40 minutes.

### SUBSTRATE PREPARATION

The substrate should be clean and sound, free of dust loose particles, grease, oil, primers from previous membrane systems or bitumen. Bitumen or primers should be removed by shotblasting or mechanical means, alternatively seal with a Cormix Sealer. Bond tests should be undertaken if the surface is already saturated with bitumen or bitumen primers. Spalled concrete should be repaired by cutting out to sound concrete and patching with **Conpatch 600** (consult Cormix International Technical Department).

### APPLICATION

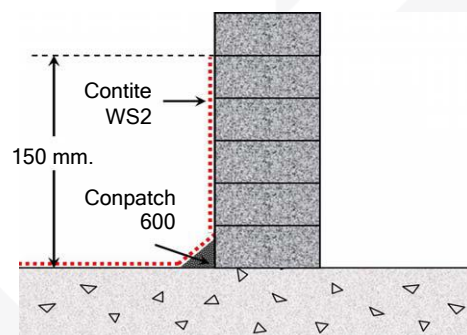
Saturate the concrete's surface with clean water. Apply the first coat while the surface is still damp but no free standing water. Apply using a short stiff bristle brush or roller at a minimum of 0.5-1.0 mm per coat. Leave to dry for 2-6 hours. The second coat can be rubbed down with a soft dry sponge. Spray or trowel application is acceptable providing the mixing ratio is adjusted to achieve the right consistency.

### PRECAUTIONS

Pull off tests should be undertaken with non-standard surfaces and to check bond of tile adhesive to **Contite WS2**. On hot surfaces e.g. above 40°C surface temperature a primer coat of mixed **Contite WS2** and water with a slurry consistency should be applied. Consideration to saturating the surface in advance and protection from adverse wind & sun conditions must be given in exposed areas. The **Contite WS2** must be applied over the primer coat before it dries. For light foot traffic areas the coating should be at least 2 mm thick. For advice contact Cormix Technical Service Department.

### DETAILING

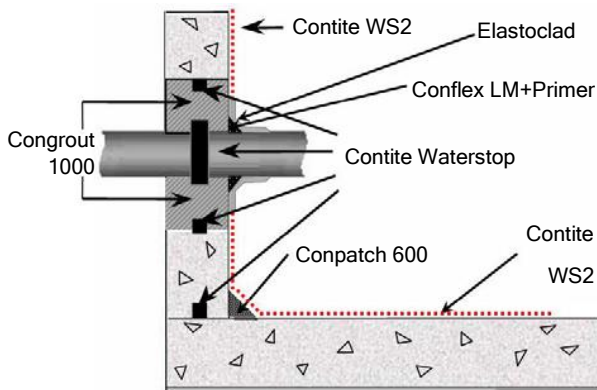
Wall to Floor Joint Detail - Blocks, Bricks or Concrete



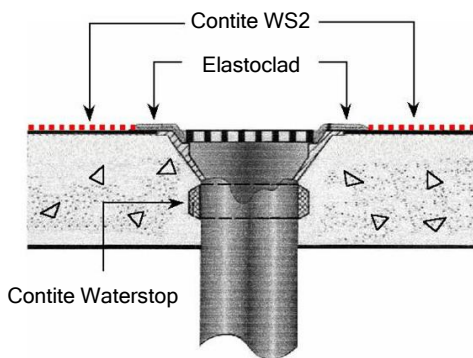
## Contite® WS2

A TWO PART CEMENTITIOUS WATERPROOFING MEMBRANE FOR CONCRETE & MORTAR SURFACES

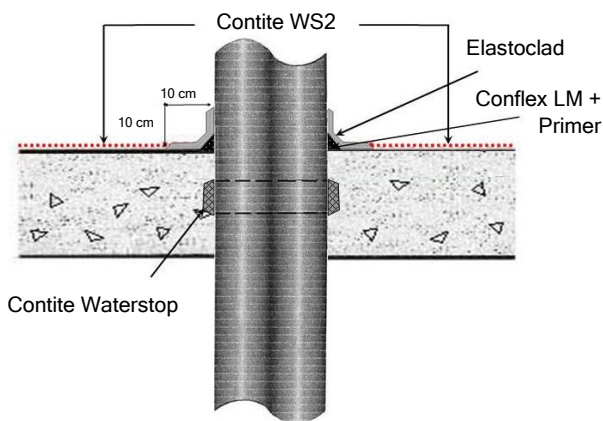
### Construction/Cold Joint & Pipe Penetration Detail



### Drain Detail



### Penetration Detail



### CURING

Contite WS2 should be protected from high wind & intense sunshine. Keep moist for 3 - 4 days after application. Protect from rain until fully hardened.

### SUBSEQUENT FINISHES

Contite WS2 is compatible with most forms of subsequent coatings.

### COVERAGE RATES

2-3 kg/m<sup>2</sup>/2 coats. Actual coverage depends upon porosity & texture of the substrate.

### CLEANING

Clean tools with water before material hardens.

### PACKAGING

25 kgs set. Part A liquid 5 kg plastic pails; Part B powder 20 kg bags.

### STORAGE & SHELF LIFE

In excess of 9 months if unopened, stored free from frost, moisture and direct sunlight.

### HEALTH & SAFETY

Contite WS2 is non-toxic but is alkaline in its nature. When applying gloves & goggles should be worn. Wash off splashes to skin with water. If in eyes wash out with plenty of clean water and seek medical attention. Contite WS2 is non-flammable.

### TECHNICAL SERVICE

The Cormix International Technical Service Department is available to assist you in the correct use of our products and its resources are at your disposal entirely without obligation.

### QUALITY ASSURANCE

ISO 9001: 2015 verified by TUV Nord.



Cormix International Limited  
89 Romklao Rd, Sansab,  
Minburi, Bangkok 10150  
09  
1012-CPD-0102  
EN 1504-2/EN1504-9  
Protection and repair of  
Concrete structures :

Surface protection systems for  
concrete coating (PI, MC, IR)

Permeability to CO <sub>2</sub> :	SD > 50 m
Permeability to water vapour:	SD > 5 m
Capillary absorption and Permeability to water:	< 0.1 kg/m <sup>2</sup> h <sup>0.5</sup>
Pull-off test:	≥ 0.8 N/mm <sup>2</sup>
Dangerous substances:	Comply with 5.4
Reaction to fire:	Class E

### CONTACT DETAILS

Cormix International Limited  
89 Romklao Rd., Sansab, Minburi, Bangkok 10510  
Tel. (66 2) 917 3955-8, 543 8890  
Fax. (66 2) 917 3959, 543 8891  
<http://www.cormix.com>  
E-mail: [info@cormix.com](mailto:info@cormix.com)