

# Contite® HHH

CONCRETE WATERPROOFING BY CRYSTALLIZATION & MOISTURE PROTECTION FOR LARGE CONCRETE STRUCTURES

## DESCRIPTION

**Contite HHH** is a unique water based large concrete structure waterproofer providing protection against temperature and water combination problems such as thermal cracking, freeze thaw, chloride penetration and alkali silica reaction damage. The triple mechanism effect of hydrophilic, hydrophobic and hygroscopic properties provide durable protection to the concrete against water borne chemicals, freeze thaw and other attack.

## USES & ADVANTAGES

Use as protection against water and moisture associated problems for concrete and cementitious structures e.g. airport runways & taxiways, bridges, concrete roads, ports, tunnels, parking lots etc.

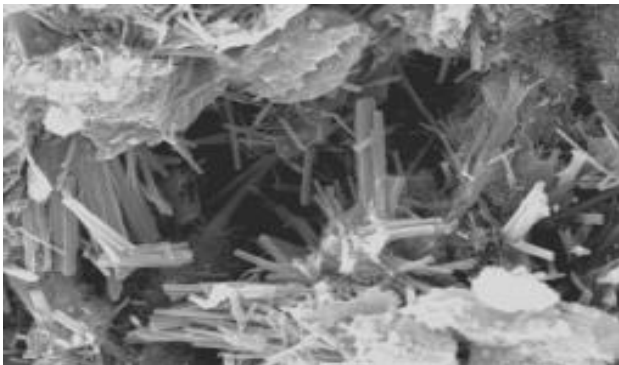
### Advantages include:-

- Resistant to jet fuel, oil acid and deicing salts.
- Reduces Alkali silica reaction.
- Seals and protects hairline cracks.
- Water based non toxic.
- Will not contaminate water courses.
- Permanent waterproofing.
- Prevents ingress of chloride ions in marine structures.
- Subsurface internal waterproofing.
- Eliminates freeze thaw damage.

Compatible with concrete containing PFA and other pozzolanic materials.

## PROPERTIES AND COMPLIANCES

<b>Colour:</b>	Turbid liquid
<b>Odour:</b>	None
<b>Density:</b>	1.17 ± 0.02 kg/ltr
<b>Viscosity:</b>	25 - 35 cPs
<b>Toxicity:</b>	Non - Toxic.
<b>Freezing point:</b>	- 4°C
<b>Boiling point:</b>	> 100°C



Fully developed crystal growth at 28 days within the capillary tracts of concrete blocking flow of water

Complies and tested to the following standards:

ASTM C666-97 standard test method for resistance of concrete to rapid freezing & thawing.

- AASHTO T259-00 resistance of concrete to chloride ion penetration.
- BSEN-12390-part 8 Testing hardened concrete. Depth of penetration of water under pressure
- BS1881-part 122 Testing concrete. Method for determination of water absorption

## SURFACE PREPARATION

Concrete must be clean, dry and sound before application remove all curing compound, mould oils, dirt or other materials that may interfere with the products penetration.

Water blasting is an effective method of surface preparation providing an open pore structure to the surface.

## APPLICATION AND CURING

Stir before use and apply by knapsack spray for big areas use a heavy duty sprayer.

Once the surface is touch dry (within 2-6 hours depending on weather conditions) & no later than 6 hours flood the treated area with water. Repeat flooding/spraying 2-3 times per day for the next 2 days.

## COVERAGE RATE

5 m<sup>2</sup>/litre/coat. Depends upon porosity and absorption of substrate.

## PACKAGING

25 Ltr & 200 Ltr Plastic pails.

## STORAGE AND SHELF LIFE

Store in the shade do not allow to freeze. Shelf life is 12 months in original sealed containers. Stir before application.

## HEALTH AND SAFETY

If swallowed increase liquid intake for 24 hours. Consult a doctor. Eye contact should be avoided by the use of eye protection if contact is made flush with large amounts of water continue for several hours. Where in contact with skin remove with water. Avoid direct contact with eyes at all times. In enclosed environment use breathing apparatus.

**TECHNICAL SERVICE**

The Cormix International Technical Service Department is available to assist you in the correct use of our products and its resources are at your disposal entirely without obligation.

**QUALITY ASSURANCE**

ISO 9001: 2015 verified by TUV Nord.



Cormix International Limited 89 Romklao Rd, Sansab, Minburi, Bangkok 10150 09 1012-CPD-0102 <b>EN 1504-2</b> <b>Protection and repair</b> <b>of concrete structures :</b> Surface protection system for concrete (Impregnation)	Abrasion resistance:	at least 30%
	Capillary absorption and permeability to water:	$\leq 0.1 \text{ kg/m}^2 \cdot \text{h}^{0.5}$
	Impact resistance:	$>20 \text{ Nm}$
	Pull-off:	$\geq 0,8$
	Depth of penetration:	$\geq 5 \text{ mm.}$
	Dangerous substances:	Comply with 5.4
	Reaction to fire:	Class A1

**CONTACT DETAILS**

**Cormix International Limited**  
 89 Romklao Rd., Sansab, Minburi, Bangkok 10510  
 Tel. (66 2) 917 3955-8, 543 8890  
 Fax. (66 2) 917 3959, 543 8891  
<http://www.cormix.com>  
 E-mail: [info@cormix.com](mailto:info@cormix.com)